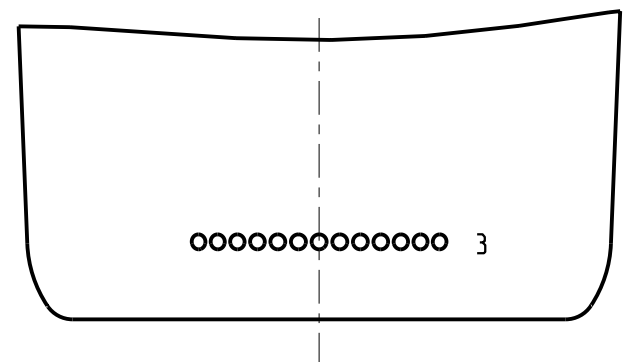
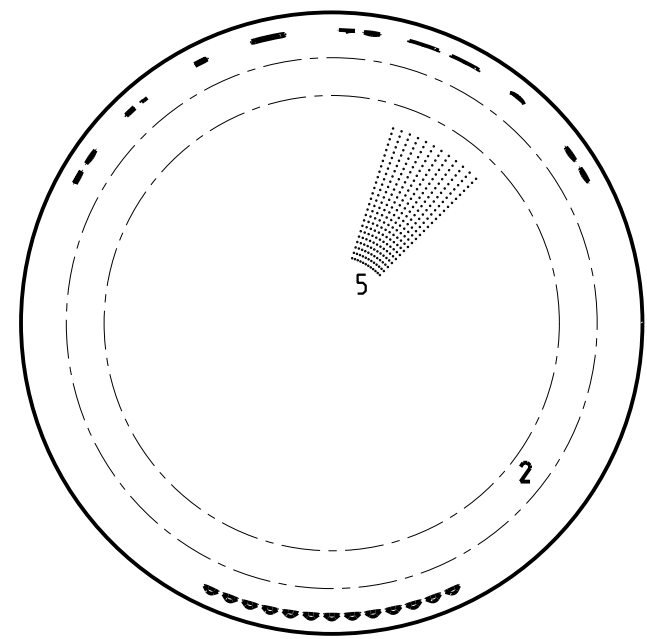
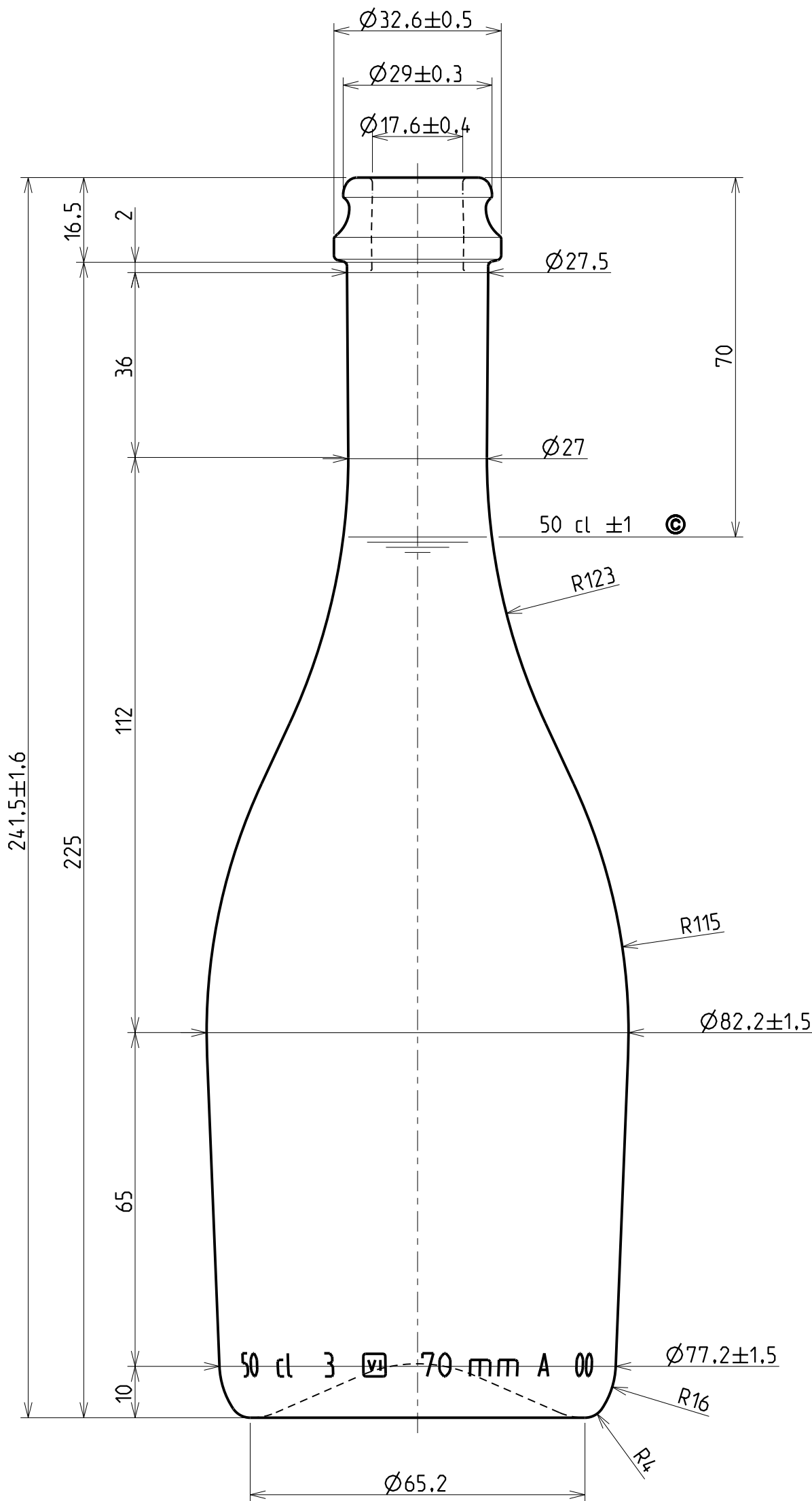


VISTO PER APPROVAZIONE

DATA _____

VI	MARCHIO DI FABBRICA TRADE MARK
A	CONTRASSEGNO TIPO VETRO GLASS TYPE
00	NUMERO STAMPO CAVITY NUMBER
2	ZIGRINATURA KNURLING
3	PUNTI LETTORE CAVITA' DOTE CODE
4	CODICE ALFANUMERICO NUMERIC CODE
5	GODRONATURA A DISCREZIONE DELLA VETRERIA STIPPLING AT THE DISCRETION OF THE GLASS MAKER
©	CONTROLLO STATISTICO STATISTICAL CONTROL



A.1	14/09/10SI	Agg. tolleranza diam. max bocca	FORMAT
R.V.	DATA	NC	DESCRIZIONE MODIFICA - MODIFICATION DESCRIPTION
			A3



ARTICOLO ARTICLE	BIRRA FRIZ 52-FC29	PROGETTISTA DRAWING BY	B. Chiarlone	CAPAC. RB (cl) BRIMFULL CAPACITY	52
BOCCA FINISH	FASCETTA CORONA 29 H 16.5	DATA DATE	19/06/09	PESO (gr) GLASS WEIGHT	400
CLIENTE CUSTOMER	VARI	APPROVATO DA APPROVATED BY	E. Zanella	COD. BOCCA FINISH CODE	B000290_002
DIAMETRO MIN. FORO PASSANTE MINIMUM INTERNAL DIAMETER	14	TOLLERANZA VERTICALITA' VERTICALITY TOLERANCE	± 2,7	STUDIO CODE STUDY	ST14949
		SCALA SCALE	1:1	R.V.	A.1

QUESTO DISEGNO E' DI PROPRIETA' DI SAINT-GOBAIN VETRI SPA / This design is property of SAINT-GOBAIN VETRI SPA - NE E' VIETATA LA RIPRODUZIONE SENZA PREVENTIVA AUTORIZZAZIONE SCRITTA / Any reproduction without previous written permission is prohibited

QUOTE ESPRESSE IN mm / Dimension expressed in mm - SOLO LE QUOTE CON INDICAZIONE DI TOLLERANZA SONO IMPEGNATIVE / Dimensions are contractual only when tolerances are indicated.